

# MF

M by FLECHET

# NEW CO.

SPRING SUMMER  
PRINTEMPS ÉTÉ

2025



THE HAT THAT LOVES *YOU.*

WWW.MBYFLECHET.FR

M BY FLÉCHET®, SISTER BRAND OF THE FAMOUS FLÉCHET BRAND, CREATOR OF FRENCH HATS SINCE 1859.



# WE ARE  
A R E  
A b y F L É C H E T

M BY FLÉCHET® KNOW HOW TO PERFECT THE STYLE OF EACH OF YOUR LOOKS, ACCOMPANING YOU ON ALL OCCASIONS, ADAPTING TO YOUR MOODS AND DESIRES.

*Share with us your look on*

*Social — media*



#SPRING SUMMER 2025  
@M\_BY\_FLECHET

© M by FLECHET 08/2024



**CONTENTS**

NEW COLLECTION SPRING SUMMER 2025

*him*

<b>CAPS</b>	<b>04 - 25</b>
/ Timeless	6
/ Fancy	12
/ Denim	14
/ Sport	16
/ Patchwork	19
/ Plain	20
<b>STRAW</b>	<b>26 - 35</b>
/ Straw	28
/ Paper straw	29
/ Raffia braid	33
/ Raffia crochet	34
<b>PANAMA</b>	<b>36 - 39</b>
<b>RAINWEAR</b>	<b>60 - 63</b>

*her*

<b>PANAMA</b>	<b>36 - 39</b>
<b>STRAW</b>	<b>40 - 53</b>
/ Crushable - crochet straw	42
/ Florentine straw	43
/ Paper straw	46
/ Raffia	50
/ Raffia	51
/ Raffia braid	52
<b>CITY FASHION</b>	<b>54 - 59</b>
<b>RAINWEAR</b>	<b>60 - 63</b>
<b>ACCESSORIES</b>	<b>64</b>
<b>GLOSSARY/INDEX</b>	<b>67</b>

**Special thanks**

We would like to thank the photographer Olivier Merzoug for making the photo shoot of our spring summer 2025 catalog.  
[oliviermerzoug.com](http://oliviermerzoug.com)

**SALES TEAM**

FRANCE + BELGIUM

**Alain MONIE**

FRANCE NORTH-WEST + BELGIUM

☎ +33(0)7 55 59 45 96

✉ [a.monie@mbyflechet.fr](mailto:a.monie@mbyflechet.fr)**Jean-Michel BEYSSAC**

FRANCE SOUTH-WEST/EAST + CORSICA

☎ +33(0)6 76 02 51 55

✉ [jm.beysac@mbyflechet.fr](mailto:jm.beysac@mbyflechet.fr)**Sales office**

FRANCE NORTH-EAST + RHÔNE-ALPES

☎ +33(0)5 49 98 84 18

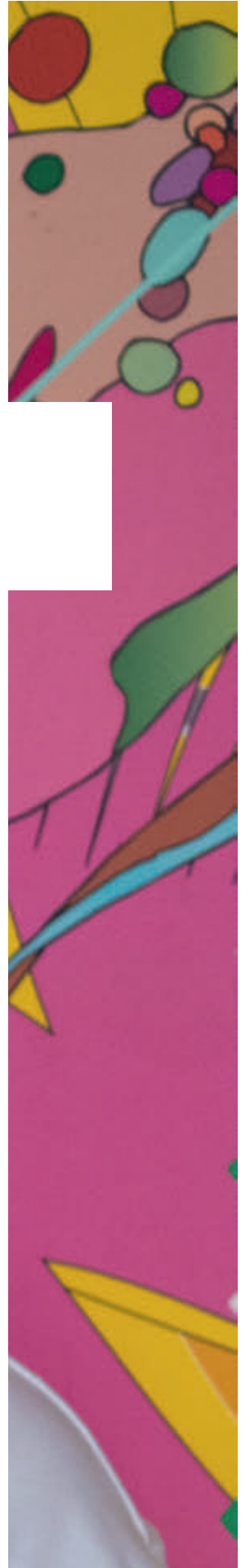
✉ [service@flechet-group.com](mailto:service@flechet-group.com)**HEAD OFFICE**

+33(0)5 49 98 84 18

SERVICE@FLECHET-GROUP.COM  
WWW.MBYFLECHET.FRAVENUE DE LA COOPÉRATION  
86200 LOUDUN - FRANCE







# Caps

MEN'S COLLECTION

TIMELESS · FANCY · DENIM · SPORT  
PATCHWORK · PLAIN

The cap has become a must-have in men's fashion. Much more than just a practical accessory, it has become a real style statement. With its strong character, it's the perfect reflection of your personality! Our range of caps is a veritable playground for your style. Varied shapes, innovative materials, bold styles and a wide range of colours: there's something to suit every taste and mood. But beyond their diversity, they all share a common mission: to offer you optimum sun protection without ever sacrificing your comfort.

MODELS CHARACTERISTICS ICONS



Leather



Waterproof



UV Index



Linex



Cotton



Silk



S


VO. 1

M



Some.



ref. 1E523 

COMPOSITION 100% LINEN  
COLOURS BLUE - NATURAL - BEIGE - BLACK  
SIZES 55 → 62




U

E



WHERE



ref. 1E524 

COMPOSITION 100% LINEN  
COLOURS BLUE - NATURAL - BEIGE - BLACK  
SIZES S → XL



M

B



caps

# TIMELESS

TRAVEL / WEEKEND CO.




The « Timeless » collection : your passport to style without frontiers ! The above travel essentials will enhance your outfits, from sunbathing to a romantic dinner. Easy to carry, they'll add charm and protection in style. Our « Timeless » collection transcends seasons and destinations. Each model is ready to join you on your adventures, adding a touch of style to every stopover. So don't lose your style and add your favourite model into your luggage!



TRAVEL CO.

   
ref. 1E517   
COMPOSITION 100% LINEN  
COLOURS BEIGE - NAVY - BLACK  
SIZES 55 → 62

   
ref. 1E518   
COMPOSITION 100% LINEN  
COLOURS BEIGE - NAVY - BLACK  
SIZES 55 → 62

   
ref. 1E455   
COMPOSITION 75% LINEN 25% COTTON  
COLOURS BEIGE - BLUE - GREY  
SIZES 55 → 62

   
ref. 1E204   
COMPOSITION 75% LINEN 25% COTTON  
COLOURS BEIGE - BLUE - GREY  
SIZES 55 → 62



 **ref. 1E529**   
COMPOSITION 100% LINEN  
COLOURS NATURAL - BLUE  
SIZES S → XL



 **ref. 1E519**   
COMPOSITION 100% LINEN - 100% POLYESTER  
COLOURS BEIGE - NAVY - JEANS - BLACK  
SIZES S → XL

90 F11.0 X P80/2 120

50

90 F11.0 X P80/2 120

**TRAVEL CO.**

X 90 F11.0 X P80/2 120



▶ 1E517 MODEL BEIGE P.7

▶ 5



▶ 1E519 MODEL JEANS

▶ 5



▶ 1E523 MODEL BLUE P.6




 **ref. 1E500**   
COMPOSITION 100% LINEN  
COLOURS GREY - BEIGE - NATURAL - ORANGE - BLUE  
SIZES 55 → 62



 **ref. 1E501**   
COMPOSITION 100% LINEN  
COLOURS GREY - BEIGE - NATURAL - ORANGE - BLUE  
SIZES 55 → 62



 **ref. 1E453**   
COMPOSITION 100% LINEN  
COLOURS GREY - TAUPE - JEANS - HONEY - BRICK  
SIZES 55 → 62



# WEEKEND CAP

MEN'S COLLECTION  
TIMELESS

8/9



ref. 1E514

COMPOSITION 60% LINEN 40% COTTON  
COLOURS BLUE - BEIGE  
SIZES 55 → 62



ref. 1E511

COMPOSITION 100% LINEN  
COLOUR TYPE  
SIZES S → XL



ref. 1E510

COMPOSITION 100% LINEN  
COLOUR TYPE  
SIZES 55 → 62



ref. 1E513

COMPOSITION 100% LINEN  
COLOUR TYPE  
SIZE S → XL

POINT

WAYS ON P

WEEKEND

ENDLESS ADVENTURES

ONE C

— YOUR STYLE SIDEKICK, ALWAYS ON POINT



ref. 1E512

COMPOSITION 100% LINEN  
COLOURS TAUPE - BLUE  
SIZES 55 → 62

MBYFLECHET /  
SPRING SUMMER CO



100% LINEN  
LINING



ref. 1E508

COMPOSITION 65% LINEN 35% COTTON  
COLOURS NAVY - BEIGE - BLUE  
SIZES 55 → 62



100% LINEN  
LINING



ref. 1E509

COMPOSITION 65% LINEN 35% COTTON  
COLOURS NAVY - BEIGE - BLUE  
SIZES S → XL

90 F11.0 X P80/2 120

50

90 F11.0 X P80/2 120

50

90 F11.0 X 90 F11.0 X P80/2 120

WEEKEND



1E538 MODEL BLUE ▶ 5



1E537 MODEL BROWN ▶ 5



1E509 ▶ BEIGE



ref. 1E515

COMPOSITION 50% LINEN 50% COTTON  
COLOURS BLACK - BLUE  
SIZES 55 → 62



ref. 1E516

COMPOSITION 50% LINEN 50% COTTON  
COLOURS BLACK - BLUE  
SIZES 55 → 62



ref. 1E538

COMPOSITION 96% COTTON 4% ELASTANE 50% LINEN 50% COTTON  
COLOURS BLUE - NAVY - BROWN - NATURAL  
SIZES S → XL



ref. 1E536

COMPOSITION 50% LINEN 50% COTTON  
COLOURS BEIGE - BLUE  
SIZES 55 → 62



ref. 1E537

COMPOSITION 96% COTTON 4% ELASTANE 50% LINEN 50% COTTON  
COLOURS BLUE - NAVY - BROWN - NATURAL  
SIZES 55 → 62



ref. 1E535

COMPOSITION 100% LINEN  
COLOUR TYPE  
SIZES 55 → 62







ref. 1E36

COMPOSITION 100% LINEN  
COLOURS BEIGE - BRICK - NAVY - JEANS - GREY  
SIZES 55 → 62

00/2 120

50

90 F11.0 X P80/2 120

50

90 F11.0 X P80/2 120

50



▶ 5



1E508 MODEL BLUE P.10 ▶ 5



▶ 1E414 MODEL TAUPE ▶ 5

WEEKEND



ref. 1E414

COMPOSITION 100% LINEN  
COLOURS BLUE - TAUPE - BEIGE  
SIZES 55 → 62



ref. 1E505

COMPOSITION 100% LINEN  
COLOURS BEIGE - BRICK - NAVY  
SIZES S → XL



ref. 1E407

COMPOSITION 100% LINEN  
COLOURS GREY - JEANS - BEIGE - BRICK - NAVY  
SIZES 55 → 62



ref. 1E403

COMPOSITION 89% COTTON 7% LINEN  
3% POLYESTER 1% POLYAMIDE  
COLOURS BLUE - BEIGE  
SIZES 55 → 62





**ref. 1E576**   
COMPOSITION 100% COTTON  
COLOUR TYPE  
SIZES 55 → 61



**ref. 1E577**   
COMPOSITION 100% COTTON  
COLOUR TYPE  
SIZES ONE SIZE



**ref. 1E578**   
COMPOSITION 100% COTTON  
COLOUR TYPE  
SIZES S → XL

90 F11.0 X P80/2 120 50



1E570 MODEL PINK

▶ 5

90 F11.0 X P80/2 120 50



1E572 MODEL PINK

▶ 5

90 F11.0 X 90 F11.0 X P80/2 120



1E570 PINK



**ref. 1E570**   
COMPOSITION 100% COTTON  
COLOURS BLUE - PINK  
SIZES 55 → 61



**ref. 1E571**   
COMPOSITION 100% COTTON  
COLOURS BLUE - PINK  
SIZES ONE SIZE



**ref. 1E572**   
COMPOSITION 100% COTTON  
COLOURS BLUE - PINK  
SIZES S → XL





caps

# FANCY

Goodbye winter ! Make way for a festival of bold colours and patterns ! Say goodbye to coats, hats and scarves - summer is here to awaken your style! Our fancy designs are ready to bring your most expressive looks to life. Unleash your inner artist! Dare to shake things up, play with contrasts and let your imagination take control. Dreamer or provocateur, choose your character for the day !  
Your summer wardrobe is waiting for you to set it alight. ENJOY THE SUMMER VIBES !



**ref. 1E573**   
COMPOSITION 100% COTTON  
COLOUR TYPE  
SIZES 55 → 61



**ref. 1E575**   
COMPOSITION 100% COTTON  
COLOUR TYPE  
SIZES S → XL



**ref. 1E574**   
COMPOSITION 100% COTTON  
COLOUR TYPE  
SIZE ONE SIZE








ref. 1E6   
COMPOSITION 100% COTTON  
COLOUR TYPE  
SIZES 55 → 62




ref. 1E419   
COMPOSITION 55% LINEN 45% COTTON  
COLOUR TYPE  
SIZES 55 → 62

EXPLORE — DISCOVER —

DENIM CO.

DENIM, THE EMBLEM OF URBAN FASHION AND AN ICON OF POP CULTURE! APPRECIATED FOR ITS ROBUSTNESS AND RELAXED AESTHETIC, THIS LEGENDARY FABRIC HAS PROUDLY STOOD THE TEST OF TIME. FROM STREET WEAR TO CASUAL CHIC, DENIM SUITS EVERY GENERATION WITH A STYLE THAT IS BOTH TRENDY AND CASUAL. WE LOVE ITS VERSATILITY!



ref. 1E400   
COMPOSITION 100% COTTON  
COLOUR TYPE  
SIZES S → XL



CREATE — IMAGINE —



ref. 1E401   
COMPOSITION 100% COTTON  
COLOURS JEANS - RAW JEANS  
SIZE ONE SIZE



ref. 1E503   
COMPOSITION 100% COTTON  
COLOUR TYPE  
TAILLES 55 → 62



JEAN CO. - CRAFTED FOR YOU FOR LIFE



ref. 1E530 

COMPOSITION 100% COTTON  
COLOURS RED - BLUE - YELLOW  
SIZES 55 -> 62



DENIM CO.



ref. 1E504 

COMPOSITION 100% COTTON  
COLOURS JEANS - WASHED JEANS  
SIZES S -> XL



ref. 1E532 

COMPOSITION 100% COTTON  
COLOURS RED - BLUE - YELLOW  
SIZES S -> XL

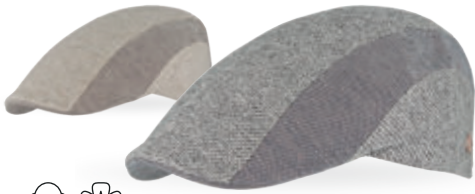


WEAR THE LEGEND - DENIM FOREVER

MBYFLECHET /  
SPRING SUMMER CO

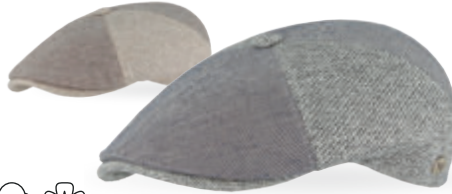


100% COTTON  
LINING



ref. 1E415 

COMPOSITION 50% LINEN 50% COTTON  
COLOURS BEIGE - GREY  
SIZES 55 → 62



ref. 1E416 

COMPOSITION 50% LINEN 50% COTTON  
COLOURS BEIGE - GREY  
SIZES 55 → 62



ref. 1E463 

COMPOSITION 50% POLYESTER 50% VISCOSE  
COLOURS NAVY - NATURAL  
SIZES 55 → 62



1E520 MODEL NAVY

▶ 5



1E416 MODEL GREY

▶ 5



1E539 NAVY P.18



ref. 1E520 

COMPOSITION 70% COTTON 30% LINEN  
COLOURS NAVY - GREY  
SIZES 55 → 62



ref. 1E521 

COMPOSITION 70% COTTON 30% LINEN  
COLOURS NAVY - GREY  
SIZES S → XL



ref. 1E34 


COMPOSITION 100% COTTON  
COLOURS BLACK - BEIGE - ECRU - NAVY  
SIZES 55 → 62



ref. 1E39 

COMPOSITION 100% COTTON  
COLOURS BLACK - BEIGE - ECRU - NAVY  
SIZES 55 → 62



ref. 1E2 

COMPOSITION 100% COTTON  
COLOURS BLACK - NAVY - TAUPE - RED  
SIZE ADJUSTABLE ONE SIZE



TAUPE  
BACK VIEW

THE SPORTS COLLECTION HAS A RHYTHM WITH STRONG COLOURS! WE LOVE THE DIVERSITY : FLAT CAP, DOMED CAP, SAILOR CAP, BASEBALL CAP, BUCKET HAT, AND WE LOVE THEIR AMBITION: TO GIVE YOU A RELAXED, TRENDY AND COLOURFUL LOOK.

MEN'S COLLECTION  
SPORT

16/17

caps

# SPORT *fashion*

00/2 120

50



▶ 5

90 F11.0

X

P80/2 120

50



1E463 MODEL NAVY P.16 ▶ 5

90 F11.0

X

P80/2 120

50



1E521 MODEL NAVY P.16 ▶ 5



ref. 1H81

COMPOSITION 80% WOOL 20% POLYESTER  
COLOURS BLACK - NAVY  
SIZES 55 → 61



ref. 1E471

COMPOSITION 99% COTTON  
1% ELASTANNE  
COLOURS NAVY - BEIGE  
SIZES 55 → 62



ref. 1H80

COMPOSITION 80% WOOL  
20% POLYESTER  
COLOURS RED - NAVY - BLACK  
SIZE AJUSTABLE ONE SIZE

OPTION  
MADE IN FRANCE  
ref. 1H80BIS







ref. 1E11

COMPOSITION 70% COTTON 30% LINEN  
COLOURS BLUE - RED - BEIGE  
SIZES 55 → 62



100% LINEN  
LINING



ref. 1E276

COMPOSITION 50% COTTON 50% LINEN  
COLOURS BLUE - RED - BEIGE  
SIZES 55 → 62

0 F11.0 X P80/2 120 50



1E540 MODEL LAGOON



5

90 F11.0 X P80/2 120 50



1E539 MODEL BLUE



5

90 F11.0 X 90 F11.0 X P80/2 120



1E540 CORAL



ref. 1E539

COMPOSITION 96% COTTON 4% ELASTANE  
COLOURS BLUE - CORAL - LAGOON - NAVY  
SIZES S → XL



CORAL  
BACK VIEW



ref. 1E540

COMPOSITION 96% COTTON 4% ELASTANE  
COLOURS BLUE - CORAL - LAGOON - NAVY  
SIZES S → XL





The visuals of the patchwork caps in the catalogue are indicative and may differ upon delivery depending on the assembly of the patches during the manufacturing process.

MEN'S COLLECTION  
SPORT · PATCHWORK

18/19

caps

# PATCHWORK



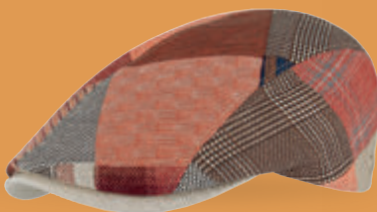
ref. 1E412

COMPOSITION 100% LINEN  
COLOUR TYPE  
SIZES 55 → 62



ref. 1E413

COMPOSITION 100% LINEN  
COLOUR TYPE  
SIZES 55 → 62



ref. 1E506

COMPOSITION 80% LINEN 20% COTTON  
COLOUR TYPE  
SIZES 55 → 62



ref. 1E507

COMPOSITION 100% LINEN  
COLOUR TYPE  
SIZES 55 → 62



ref. 1E12

COMPOSITION 80% LINEN 20% COTTON  
COLOUR TYPE  
SIZES 55 → 62



Enter the world of patchwork with the unique assembly of different yokes to make our caps. Tartan fabrics, a herringbone pattern, just the right mix of shapes and colours to create caps with a unique style that will add height to your summer outfits !



ref. 1E531

COMPOSITION 75% LINEN 25% COTTON  
COLOUR TYPE  
SIZES 55 → 62



ref. 1E534

COMPOSITION 100% LINEN  
COLOUR TYPE  
SIZES 55 → 62



ref. 1E13

COMPOSITION 75% LINEN 25% COTTON  
COLOURS RED PATCH - BEIGE PATCH  
SIZES 55 → 62



m o n

new collection

o

c

h

r

PRINTEMPS ÉTÉ 2025

SPRING SUMMER 2025

#we are m by flechet

o

m

e

1E526 MODEL P.21  
BRICK COLOUR

caps

# PLAIN


COTTON LINEN FABRICS / LEATHER /  
IMITATION LEATHER / PILOTE CO.


The plain cap is ideal for all your outfits. It's easy to mix and match, playing the chameleon role adapting to all your whims ! Choose your shape : Irish, English... depending on your mood and, above all, the shape of your face.



100% COTTON  
MADE IN ITALY  
1E526 MODEL  
BRICK COLOUR  
1E399 MODEL P.22  
TAUPE COLOUR



ref. 1E525   
COMPOSITION 100% COTTON  
COLOURS BLUE - NATURAL - BEIGE - BRICK - KHAKI  
NAVY - BLACK  
SIZES 55 → 62

ref. 1E526   
COMPOSITION 100% COTTON  
COLOURS BLUE - NATURAL - BEIGE - BRICK - KHAKI  
NAVY - BLACK  
SIZES 55 → 62





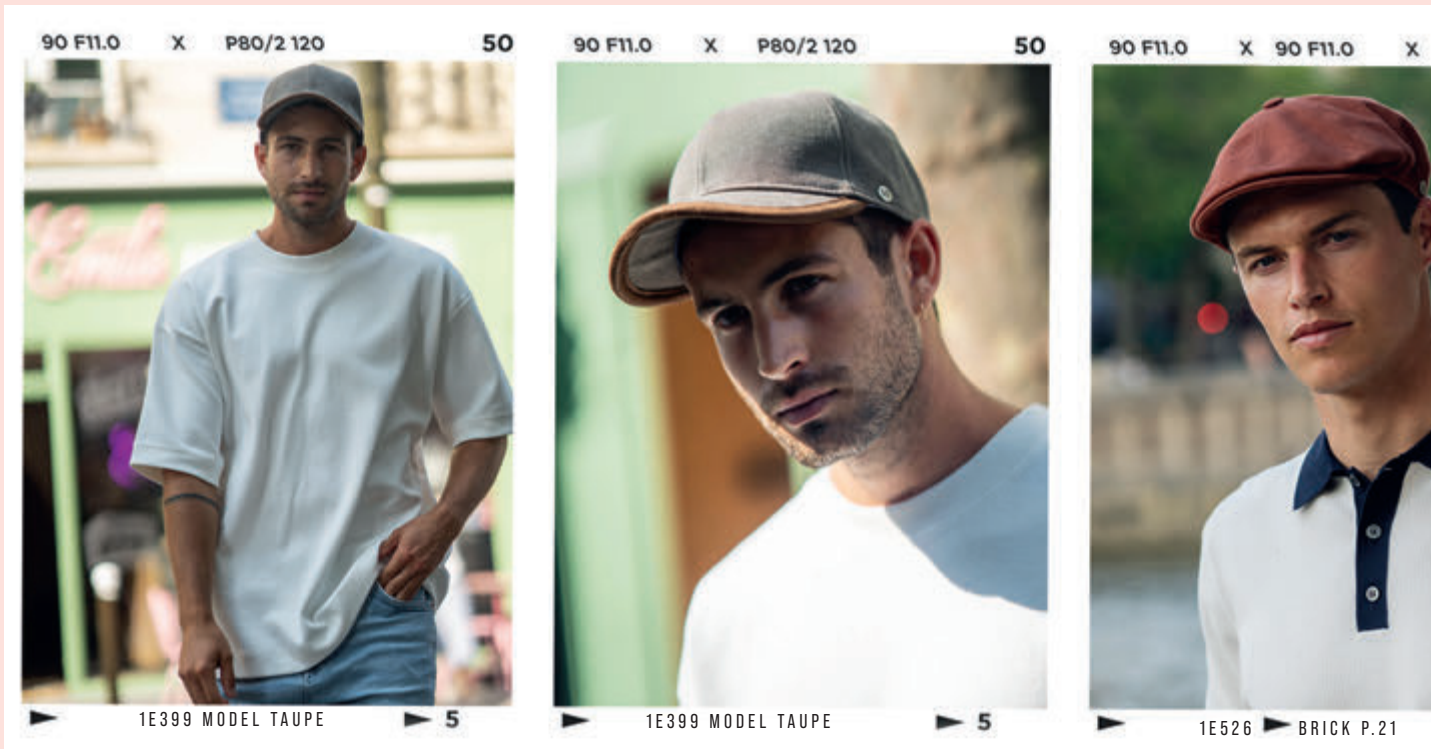
ref. 1E399

COMPOSITION 100% COTTON  
COLOURS BEIGE - CAMEL - BRICK - KHAKI - TAUPE  
JEANS - NAVY - GREY  
SIZES S → XL



ref. 1E274

COMPOSITION 100% COTTON  
COLOURS BEIGE - CAMEL - BRICK - KHAKI - TAUPE - JEANS - NAVY - GREY  
SIZES 55 → 62



90 F11.0 X P80/2 120 50

90 F11.0 X P80/2 120 50

90 F11.0 X 90 F11.0 X

1E399 MODEL TAUPE 5

1E399 MODEL TAUPE 5

1E526 BRICK P.21

## 100% cotton


COTTON : THE ULTIMATE FABRIC FOR SUMMER COMFORT! EASY TO LIVE WITH AND EASY TO PAMPER, COTTON FABRIC OFFERS AN INFINITE RANGE OF STYLES. FROM REBELLIOUS DENIM TO RELAXED CANVAS AND ULTRA-SOFT JERSEY, THERE IS A COTTON CAP FOR EVERYONE!



ref. 1E30

COMPOSITION 100% COTTON  
COLOURS BEIGE - CAMEL - BRICK - KHAKI  
TAUPE - JEANS - NAVY - GREY  
SIZES 55 → 62



ref. 1E528 

COMPOSITION 100% COTTON  
COLOURS KHAKI - BEIGE - BLUE  
SIZES S → XL



ref. 1E228 

COMPOSITION 100% LINEN  
COLOURS GREY - BEIGE - NATURAL - BRCK - BLUE  
SIZES 55 → 62



## 100% linen


LINEN : THE PERFECT FABRIC TO KEEP YOU COOL! LINEN IS A BRILLIANT THERMAL BALANCER. ITS UNRIVALLED BREATHABILITY KEEPS YOU INCOMPARABLY FRESH, EVEN UNDER THE SCORCHING SUN. AS A CHAMPION OF SUN PROTECTION, LINEN BLOCKS OUT THE HEAT WHILE KEEPING YOU COOL. WE ALSO APPRECIATE ITS LONGEVITY. WANT TO KEEP A COOL HEAD WITH STYLE? LINEN IS YOUR BEST ALLY FOR LONG-LASTING FRESHNESS!



ref. 1E102 

COMPOSITION 100% LINEN  
COLOURS GREY - BEIGE - BLUE - NATURAL - BRICK  
SIZES 55 → 62



ref. 1E101 

COMPOSITION 100% LINEN  
COLOURS GREY - BEIGE - NATURAL - BRICK - BLUE  
SIZES 55 → 62



Day a



ref. 1H13

COMPOSITION 100% NAPPA WAX LEATHER  
COLOURS COGNAC - RED - NAVY - BLACK  
SIZES 55 → 62

LEATHER

Leather : pure elegance, a natural luxury to wear !  
Sophisticated, authentic and resolutely trendy, it immediately enhances your style. From vintage allure to absolute chic or everyday casual, leather adapts brilliantly to your mood. Resistant and comfortable, a leather cap is that little extra that makes all the difference. It adds that touch of finesse that transforms a simple outfit into an exceptional look. Dare to embrace the refinement of leather and let your style speak for itself !

IMITATION  
LEATHER



ref. 1E209

COMPOSITION 100% POLYESTER  
COLOUR BROWN  
SIZES 55 → 62



ref. 1E456

COMPOSITION 100% POLYESTER  
COLOUR BROWN  
SIZES 55 → 62



LEATHER



ref. 1H8

COMPOSITION 100% HAMMERED NAPPA LEATHER  
COLOURS BLACK - BLUE - COGNAC - BROWN  
SIZES 55 → 62



Share with us your look on  
Social — media

After Day

MEN'S COLLECTION  
PLAIN

24/25



edition

PILOTE



ref. 1E457

COMPOSITION 100% LEATHER  
85% COTTON 15% POLYESTER

COLOURS BLACK - COGNAC - NAVY  
SIZES 55 → 62



ref. 1E310

COMPOSITION 100% LEATHER  
85% COTTON 15% POLYESTER

COLOURS COGNAC - NAVY - BLACK  
SIZES S → XL



PILOTE EDITION.



ref. 1E527

COMPOSITION 100% LEATHER  
100% COTTON

COLOURS BEIGE - NAVY - BLACK  
SIZES 55 → 62



ref. 1E502

COMPOSITION 100% LEATHER  
100% COTTON

COLOUR TYPE  
SIZES 55 → 62

PILOTE



Days after









# S

# Straw

---

MEN'S COLLECTION

---

STRAW · PAPER STRAW  
RAFFIA BRAID · RAFFIA CROCHET

Straw hat, the timeless summer fashion item for men, is making a comeback as soon as the first rays of sunshine appear! Its brim, more or less wide, offers a trendy protection. This hat enhances your casual outfits with natural elegance. Whether for a stroll around town, a day at the beach or an aperitif on the terrace, they're ready to join you on all your adventures. Opt for this reinvented classic and let it add a touch of freshness to your wardrobe. Our straw hats will make your summer stylish and comfortable!

MODEL CHARACTERISTIC ICON








ref. 1E70   
COMPOSITION 100% NATURAL STRAW  
COLOUR TYPE  
SIZES S → XL



ref. 1E548   
COMPOSITION 100% NATURAL STRAW  
COLOUR TYPE  
SIZES M → L

Share with us your look on  
Social — media



ref. 1E77   
COMPOSITION 100% NATURAL STRAW  
COLOUR TYPE  
SIZES 52 → 62



ref. 1E549   
COMPOSITION 100% NATURAL STRAW  
COLOUR TYPE  
SIZES S → XL



# The STRAW

The summer essential that's got it all !

A star on beaches as well as city streets, the natural straw hat juggles protection and style brilliantly. Light as a feather and as comfortable as a second skin, it keeps you out of the sun with unbridled elegance. This timeless accessory is your passport to a trendy, carefree summer !

# PAPER *Straw*

Take me everywhere ! We look so good together !  
The paper straw hat is the ideal travelling companion.



ref. 1E324

COMPOSITION 100% PAPER STRAW  
COLOURS BLACK BURGUNDY RIBBON - NATURAL NAVY RIBBON - CAMEL NAVY RIBBON  
SIZES S → XL



ref. 1E325

COMPOSITION 100% PAPER STRAW  
COLOURS BLACK - NATURAL - CAMEL  
SIZES S → XL



ref. 1E326

COMPOSITION 100% PAPER STRAW  
COLOURS BLACK - NATURAL - CAMEL  
SIZES S → XL



ref. 1E569

COMPOSITION 100% PAPER STRAW  
COLOURS BLACK - NATURAL - CAMEL  
SIZES 55 → 61



**ref. 1E267** 

COMPOSITION 100% PAPER STRAW  
COLOURS BEIGE - COFFEE - SALT AND PEPPER  
SIZES S → XL



**ref. 1E560** 

COMPOSITION 100% PAPER STRAW  
COLOURS NATURAL - BEIGE - COFFEE  
SIZES S → XL



**ref. 1E559** 

COMPOSITION 100% PAPER STRAW  
COLOURS NATURAL - BEIGE - COFFEE  
SIZES S → XL



**ref. 1E557** 

COMPOSITION 100% RAFFIA 100% PAPER STRAW  
COLOURS BEIGE - COFFEE - SALT AND PEPPER  
SIZES S → XL



**ref. 1E562** 

COMPOSITION 100% RAFFIA 100% PAPER STRAW  
COLOURS BEIGE - COFFEE - SALT AND PEPPER  
SIZES S → XL

Fineness of paper straw braids  
Light and airy, with great flexibility  
Comfortable and ideal for summer

P80/2 120

50



▶ 5

90 F11.0

X

P80/2 120

50



▶ 1E560 MODEL BEIGE P.30 ▶ 5

90 F11.0

X

P80/2 120

50



▶ 1E560 MODEL BEIGE P.30 ▶ 5



ref. 1E566 

COMPOSITION 100% PAPER STRAW  
COLOURS GREY - NATURAL - BLACK  
SIZES S → XL




ref. 1E567 

COMPOSITION 100% PAPER STRAW  
COLOURS GREY - NATURAL - BLACK  
SIZES S → XL







**ref. 1E564**   
COMPOSITION 100% PAPER STRAW  
COLOURS TOBACCO - BROWN - BEIGE  
NATURAL  
SIZES S → XL




**ref. 1E52**   
COMPOSITION 100% PAPER STRAW  
COLOURS BURGUNDY - NAVY - NATURAL - SALT AND PEPPER  
SIZES S → XL




**ref. 1E253**   
COMPOSITION 100% PAPER STRAW  
COLOURS BURGUNDY - SALT AND PEPPER - NAVY - NATURAL  
SIZES S → XL




**ref. 1E565**   
COMPOSITION 100% PAPER STRAW  
COLOURS NATURAL - TOBACCO  
SIZES S → XL



**ref. 1E161**   
COMPOSITION 100% PAPER STRAW  
COLOURS TOBACCO - NATURAL  
SIZES 55 → 61



**ref. 1E78**   
COMPOSITION 100% PAPER STRAW  
COLOURS TOBACCO - NATURAL  
SIZES S → XL



straw

# RAFFIA Braid

Raffia braid: your holiday superhero! Its tight weave protects against UV rays like a natural shield. It is as flexible as you want it to be, so it can be adapted to all your summer adventures. Beach, city, hike? Raffia braid can be adapted to any occasion.



ref. 1E425

COMPOSITION 100% RAFFIA  
100% PAPER STRAW  
COLOURS BEIGE - COFFEE - SALT AND PEPPER  
SIZES S → XL



ref. 1E561

COMPOSITION 100% RAFFIA  
100% PAPER STRAW  
COLOURS BEIGE - COFFEE - SALT AND PEPPER  
SIZES S → XL

90 F11.0 X P80/2 120 50



1E568 MODEL BLACK

▶ 5

90 F11.0 X P80/2 120 50



1E568 MODEL BLACK

▶ 5

90 F11.0 X P80/2 120 50



1E553 MODEL TYPE

▶ 5



ref. 1E568

COMPOSITION 60% RAFFIA 40% PAPER STRAW  
COLOURS BLACK - BURGUNDY  
SIZES S → XL



ref. 1E554

COMPOSITION 100% RAFFIA  
COLOUR TYPE  
SIZES S → XL



ref. 1E553

COMPOSITION 100% RAFFIA  
COLOUR TYPE  
SIZES S → XL




# Mandev

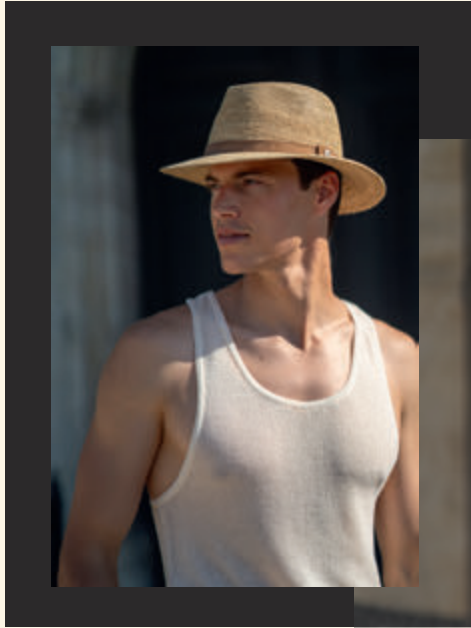
- FANCY BY  
NATURE



ref.1E1   
COMPOSITION 100% RAFFIA  
COLOUR TYPE  
SIZES S → XL




ref.1E262   
COMPOSITION 100% RAFFIA  
COLOUR TYPE  
SIZES 55 → 61




BOHEMIAN  
CHIC -

Share with us your look on  
Social — media




ref.1E113   
COMPOSITION 100% RAFFIA  
COLOUR NATURAL  
SIZES S → XL



ref.1E542   
COMPOSITION 100% RAFFIA  
COLOUR TYPE  
SIZES 55 → 61



ref.1E541   
COMPOSITION 100% RAFFIA  
COLOUR TYPE  
SIZES S → XL

The sun

MEN'S COLLECTION  
CROCHET RAFFIA

34/35


straw

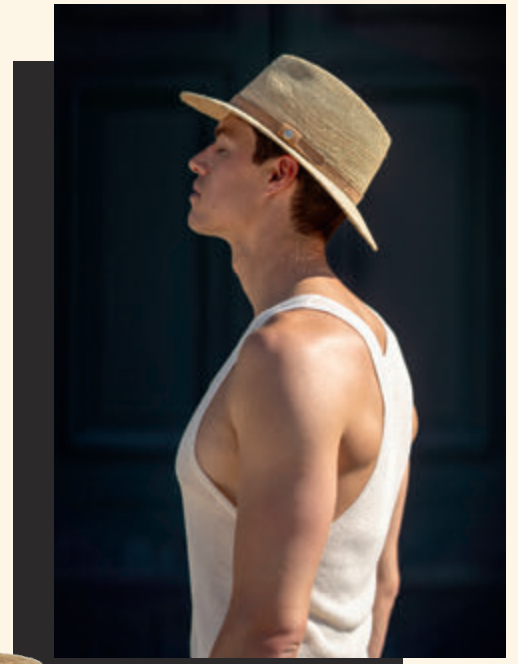
# Crochet RAFFIA

Reveal your bohemian soul with the refinement of raffia crochet! This hat is the epitome of casual chic. Its natural fibre, whether in its original golden blond or sublimated in bold shades, transports you into a world of authentic elegance. Let yourself be seduced by its exquisite finishes: a braid with a sophisticated milliner's knot, a rebellious leather strap, or a fancy ribbon. Every detail is an invitation to express your unique style !

#handcrafted  
charm  
casual elegance



ref. 1E545   
COMPOSITION 100% RAFFIA  
COLOUR TYPE  
SIZES 55 → 61



ref. 1E555   
COMPOSITION 100% RAFFIA  
COLOUR TYPE  
SIZES 55 → 61



ref. 1E556   
COMPOSITION 100% RAFFIA  
COLOUR TYPE  
SIZES 55 → 61



#soft fabric  
lightness and  
protection

CREATE -

IMAGINE -

EXPLORE -

f

sun





P

# Panama

---

MEN'S AND WOMEN'S COLLECTION

---

EXCELLENCE IN STRAW HATS

The one and only, the essential and the timeless, the Panama hat is both classic and elegant, the hat that goes with everything and delights both men's and women's faces. Whether it's a simple trip to the beach, a country wedding or a shopping trip in town, a Panama hat will enhance your look. All our Panama hats are hand-woven in Ecuador and finished in our Italian workshops to guarantee consistent quality.

MODEL CHARACTERISTIC ICON



*UV Index*

---





ref. 1E76

COMPOSITION 100% BRISA PANAMA  
COLOURS WHITE BLACK BRAID - NATURAL BLACK BRAID  
SIZES 54 → 63



ref. 1E96

COMPOSITION 100% BRISA PANAMA  
COLOURS WHITE BLACK BRAID - NATURAL BLACK BRAID  
SIZES S → XL

90 F11.0 X P80/2 120 50



1E76 MODEL WHITE ▶ 5

90 F11.0 X P80/2 120 50



1E76 MODEL WHITE ▶ 5

90 F11.0 X 90 F11.0 X



1E579 ▶ NATURAL



ref. 1E61

COMPOSITION 100% BRISA PANAMA  
COLOURS WHITE - NATURAL  
SIZES 55 → 62



ref. 1E89

COMPOSITION 100% BRISA PANAMA  
COLOURS WHITE - NATURAL  
SIZES 55 → 61



ref. 1E579

COMPOSITION 100% BRISA PANAMA  
COLOURS WHITE - NATURAL  
SIZES 55 → 61

SOFT PANAMA



ref. 1E551   
COMPOSITION 100% PAPER STRAW  
COLOUR TYPE  
SIZES 55 → 61

P80/2 120 50



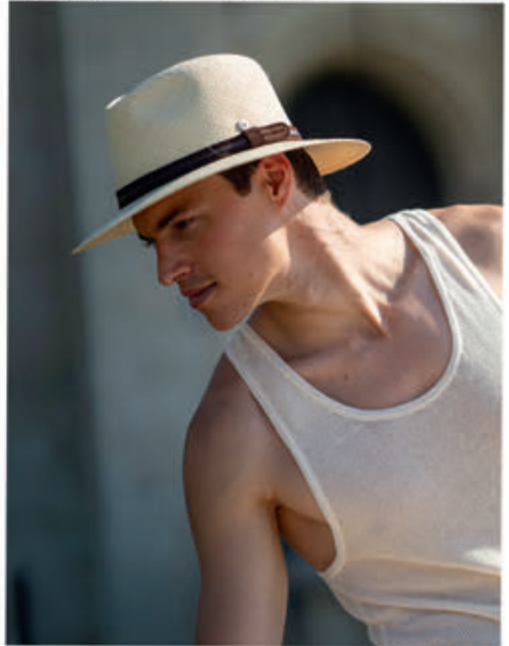
▶ 5

90 F11.0 X P80/2 120 50



▶ 1E89 MODEL WHITE P.38 ▶ 5

90 F11.0 X P80/2 120 50



▶ 1E579 MODEL NATURAL P.38 ▶ 5

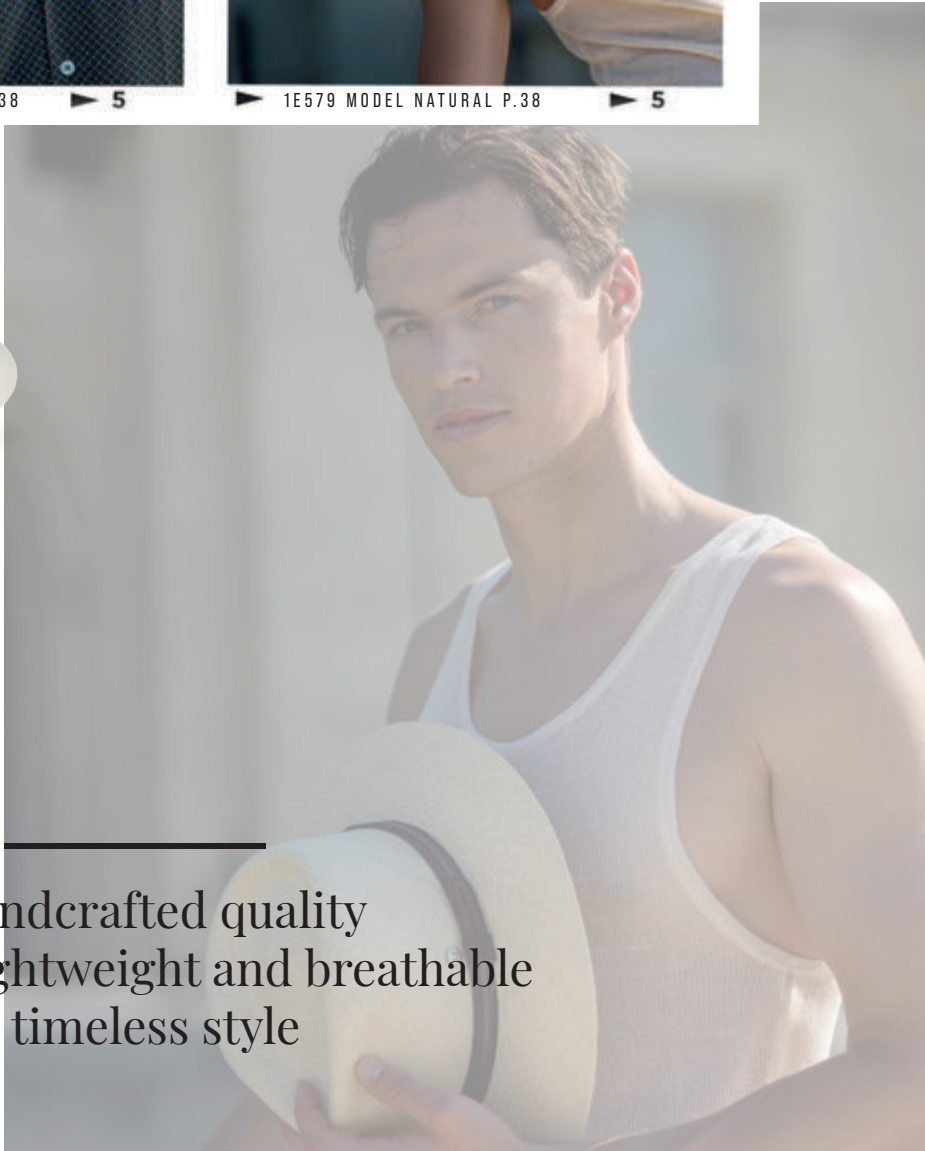


ref. 2E30   
COMPOSITION 100% BRISA PANAMA  
COLOURS NATURAL - WHITE  
SIZES S → L



ref. 2E33   
COMPOSITION 100% BRISA PANAMA  
COLOURS NATURAL - WHITE  
SIZES S → L

handcrafted quality  
elegant, lightweight and breathable  
timeless style









# S

# Straw

---

WOMEN'S COLLECTION

---

CRUSHABLE STRAW · CROCHET STRAW · SEWN STRAW  
PAPER STRAW · RAFFIA BRAID · CROCHET RAFFIA

Simple and authentic, straw can be dressed and worked differently depending on its source. Original and sophisticated, our straw hats know how to be desired. This summer, we are going for fresh, bright colours, natural simplicity and daring offbeat chic. The collection is bursting with a wide variety of shapes and finishes to ensure that your sun protection is as effective as it is stylish.

MODEL CHARACTERISTIC ICON





Vivante



ref. 2E95 

COMPOSITION 100% CRUSHABLE STRAW  
COLOUR TYPE  
SIZES S → L



ref. 2E101 

COMPOSITION 100% CRUSHABLE STRAW  
COLOUR TYPE  
SIZES S → L



ref. 2E100 

COMPOSITION 100% CRUSHABLE STRAW  
COLOUR TYPE  
SIZES S → L

# straw CRUSHABLE



A timelessly elegant ally for sun protection

Timeless and chic, it effortlessly combines protection and elegance. This guardian of your freshness bends to your will – literally! Durable and flexible, it accompanies you everywhere without losing its allure. Embrace summer confidently with this companion that will never let you down.



ref. 2E250 

COMPOSITION 100% PAILLE CRUSHABLE  
COULEUR TYPE  
TAILLES S → XL



# straw CROCHET

An air of romance surrounds  
the straw crochet hats.

Be enchanted by this summer storyteller. Each finish is a visual poem: stylish outer bands, joyful pop scarves, or delicately knotted pearls shimmering in the sun. Light as a breeze and airy as a shady nap, this crochet straw hat is a true favorite. It invites you to live your own summer fairy tale. Ready to fall for this accessory that combines freshness and fantasy?

ref. 2E252 

COMPOSITION 100% STRAW  
COLOURS ORANGE - PINK  
SIZES S → L

the sun

S

W.O. 1

M

Straw.



ref. 2E310 

COMPOSITION 100% STRAW  
COLOURS KHAKI - BLUE - ORANGE  
SIZE ADJUSTABLE ONE SIZE




U



E



WOVEN

ref. 2E311 

COMPOSITION 100% STRAW  
COLOURS KHAKI - BLUE - ORANGE  
SIZES S → L



M

B



- ELEGANT  
SIMPLICITY



ref.2E60

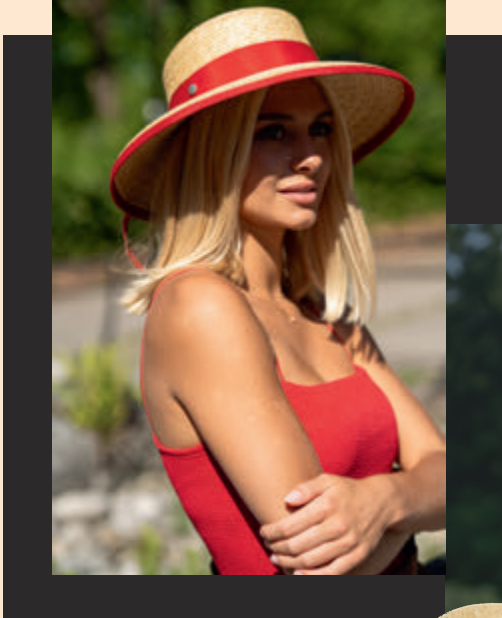
COMPOSITION 100% STRAW  
BRAID COLOURS BEIGE - BLUE - RED - NAVY - BLACK  
SIZES S → XL

- XXL  
BRIMS



ref.2E23

COMPOSITION 100% STRAW  
COLOUR TYPE  
SIZE ADJUSTABLE ONE SIZE



Share with us your look on  
Social — media



ref.2E3

COMPOSITION 100% STRAW  
BRAID COLOURS RED - BEIGE  
BLUE - NAVY - BLACK  
SIZES S → L

BOHEMIAN  
CHIC-



ref.2E56

COMPOSITION 100% STRAW  
BRAID COLOURS BEIGE - BLUE - RED - NAVY - BLACK  
SIZE ADJUSTABLE ONE SIZE



# Florentine STRAW

Admire the dance of the fine, regular plaits as they gracefully intertwine. This hat is a true masterpiece of precision, where each stitch tells a story of craftsmanship. Let yourself be seduced by its palette of shapes and its festival of colourful braids !



ref. 2E247   
COMPOSITION 100% STRAW  
BRAID COLOURS BLACK - NAVY - BEIGE  
BLUE - RED  
SIZES S → XL




#weekend  
at the sea



ref. 2E61   
COMPOSITION 100% STRAW  
BRAID COLOURS RED - BLUE - BEIGE  
NAVY - BLACK  
SIZE ONE SIZE



ref. 2E57   
COMPOSITION 100% STRAW  
BRAID COLOURS BEIGE - BLUE - RED - NAVY - BLACK  
SIZES S → L





ref.2E132 

COMPOSITION 100% FINE PAPER STRAW  
COLOURS GREY - ECRU - NAVY - PINK  
SIZES S → L



90 F11.0 X P80/2 120 50



▶ 2E329 MODEL BEIGE

▶ 5

90 F11.0 X P80/2 120 50



▶ 2E329 MODEL BEIGE

▶ 5

90 F11.0 X 90 F11.0 X P80/2 120



▶ 2E329 ▶ BEIGE



ref.2E59 

COMPOSITION 60% PAPER STRAW  
40% RAFFIA  
COLOURS COFFEE - SALT AND PEPPER  
NATURAL - BEIGE  
SIZES S → M



ref.2E216 

COMPOSITION 50% PAPER STRAW  
50% RAFFIA  
COLOURS COFFEE - SALT AND PEPPER  
NATURAL - BEIGE  
SIZES S → M

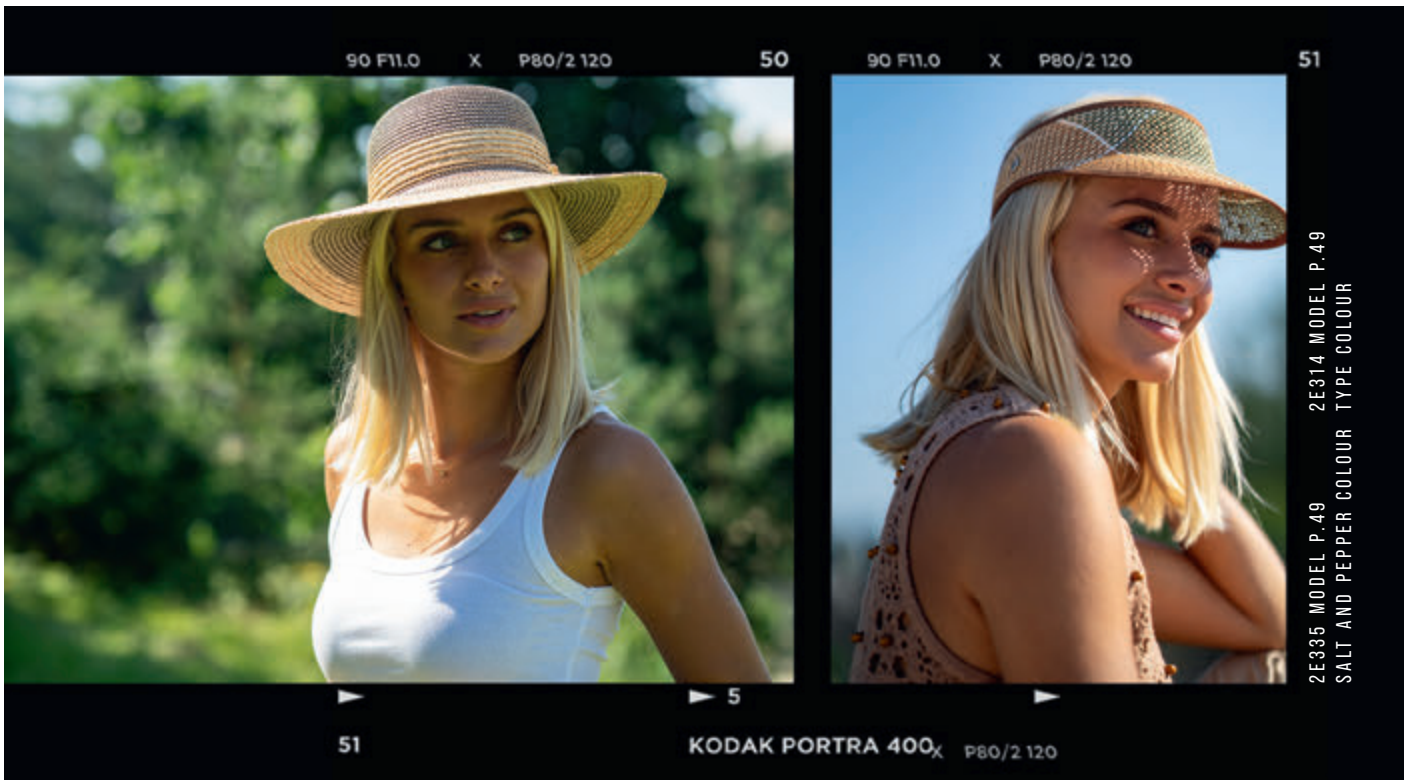
ref.2E329 

COMPOSITION 65% PAPER STRAW  
35% RAFFIA  
COLOURS COFFEE - BEIGE  
SALT AND PEPPER - NATURAL  
SIZES S → L



# PAPER *Straw*

This headgear is a real wonder of lightness and flexibility !  
With its colours and fancy finishes, it will suit all your whims.



2E335 MODEL P.49  
SALT AND PEPPER COLOUR  
2E314 MODEL P.49  
TYPE COLOUR



ref. 2E331 

COMPOSITION 100% PAPER STRAW  
COLOURS COFFEE - BEIGE - SALT AND PEPPER  
SIZE ADJUSTABLE ONE SIZE



ref. 2E332 

COMPOSITION 100% PAPER STRAW  
COLOURS COFFEE - BEIGE - SALT AND PEPPER  
SIZES S → L



ref. 2E14 

COMPOSITION 100% PAPER STRAW  
COLOURS NATURAL - COFFEE - BEIGE - SALT AND PEPPER  
SIZES S → M





ref. 2E315

COMPOSITION 100% PAPER STRAW  
COLOURS BEIGE - KHAKI - BROWN  
SIZES S → L



ref. 2E316

COMPOSITION 100% PAPER STRAW  
COLOURS BEIGE - KHAKI - BROWN  
SIZES S → L



ref. 2E317

COMPOSITION 100% PAPER STRAW  
COLOURS BROWN - NATURAL  
SIZES S → L



ref. 2E318

COMPOSITION 100% PAPER STRAW  
COLOURS BROWN - NATURAL  
SIZES ADJUSTABLE ONE SIZE



ref. 2E343

COMPOSITION 100% PAPER STRAW  
COLOURS NATURAL - BROWN  
SIZE ADJUSTABLE ONE SIZE



ref. 2E341

COMPOSITION 100% PAPER STRAW  
COLOURS NATURAL - BROWN  
SIZE ADJUSTABLE ONE SIZE



ref. 2E342

COMPOSITION 100% PAPER STRAW  
COLOURS NATURAL - BROWN  
SIZE ADJUSTABLE ONE SIZE





**ref. 2E312**   
COMPOSITION 100% PAPER STRAW  
COLOUR TYPE  
SIZES S → M

**ref. 2E313**   
COMPOSITION 100% PAPER STRAW  
COLOUR TYPE  
SIZES S → L

**ref. 2E314**   
COMPOSITION 100% PAPER STRAW  
COLOUR TYPE  
SIZE ONE SIZE

X P80/2 120 50

90 F11.0 X P80/2 120 50

90 F11.0 X P80/2 120 50



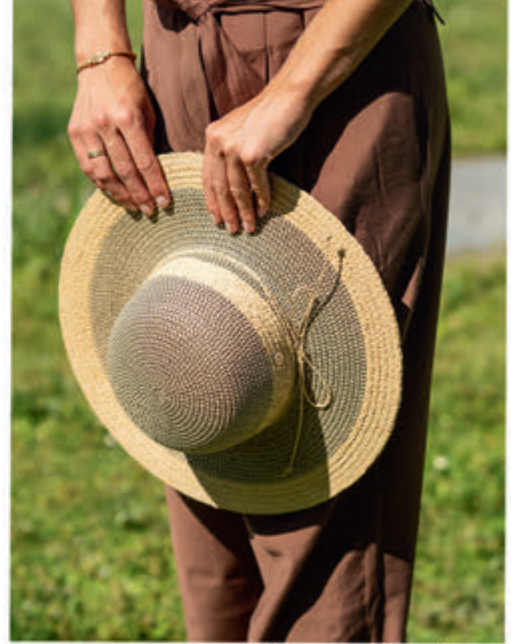
PEPPER

▶ 5



▶ 2E317 MODEL NATURAL P.48

▶ 5



▶ 2E335 MODEL SALT AND PEPPER

▶ 5



**ref. 2E333**   
COMPOSITION 100% PAPER STRAW  
COLOURS BEIGE - NATURAL  
SIZES S → L



**ref. 2E334**   
COMPOSITION 100% PAPER STRAW  
COLOURS BEIGE - NATURAL  
SIZES S → L




**ref. 2E335**   
COMPOSITION 100% PAPER STRAW 100% RAFFIA  
COLOURS COFFEE - SALT AND PEPPER  
SIZES S → L






Mandel



ref. 2E344   
COMPOSITION 100% RAFFIA  
COLOUR TYPE  
SIZES S → L



ref. 2E345   
COMPOSITION 100% RAFFIA  
COLOUR TYPE  
SIZES ADJUSTABLE ONE SIZE



ref. 2E346   
COMPOSITION 100% RAFFIA  
COLOUR TYPE  
SIZES S → L



Share with us your look on  
Social —  
media

CREATE \_

IMAGINE \_

EXPLORE \_



90 F11.0

X

P80/2 120

50

90 F11.0

X

▶ 2E344 MODEL TYPE

▶ 5

▶ 2E344 TYPE

# RAFFIA

The feminine essence of summer !

Immerse yourself in the enchanting world of raffia, where craftsmanship meets fashion with grace.  
This hat is a trove of authenticity, adding a breath of fresh air to your summer wardrobe.

# Raffia CROCHET

Crochet raffia : your all-terrain style companion ! « Shape me as you wish » whispers this crochet raffia hat.  
This plant fiber is a true chameleon: malleable as modeling clay, yet solid as a rock! Feel like turning up the brim ? Go ahead !  
Fancy a touch of color ? Why not ! Playful mood ? Sculpt it as you please !

ref. 2E53   
COMPOSITION 100% RAFFIA  
COLOUR NATURAL  
SIZES S → L



ref. 2E58   
COMPOSITION 100% RAFFIA  
COLOUR NATURAL  
SIZES S → L



P80/2 120

50

90 F11.0

X

90 F11.0

X

P80/2 120

50



▶ 5



2E346 ▶ TYPE P.50

▶ 5

90 F11.0

X

P80/2 120

50



2E346 MODEL P.50

▶ 5




ref. 2E123   
COMPOSITION 100% RAFFIA  
COLOUR NATURAL  
SIZE ADJUSTABLE ONE SIZE



ref. 2E145   
COMPOSITION 100% RAFFIA  
COLOUR TYPE  
SIZE ADJUSTABLE ONE SIZE



ref. 2E245   
COMPOSITION 100% RAFFIA  
COLOUR TYPE  
SIZES S → M

the sun



SUN-KISSED STYLE – BRAIDED JUST FOR YOU



– LIVE YOUR RAFFIA ADVENTURE



MBYFLECHET /  
SPRING SUMMER CO

# RAFFIA BRAID

Bohemian elegance at its finest !

Let yourself be carried away by the enthusiastic allure of this hat! A bohemian touch deliciously rustic, the raffia braid is the secret to a stylish summer. Its warm hue, oscillating between golden beige and sweet caramel, is a veritable hymn to the sun. Each braid is a promise of escapism, sublimated by incredibly elegant finishes.



ref. 2E337 

COMPOSITION 100% RAFFIA 100% PAPER STRAW  
COLOURS NATURAL - BROWN  
SIZES S → L



ref. 2E338 

COMPOSITION 100% RAFFIA 100% PAPER STRAW  
COLOURS NATURAL - BROWN  
SIZES S → M



ref. 2E339 

COMPOSITION 100% RAFFIA 100% PAPER STRAW  
COLOUR TYPE  
SIZES S → L



ref. 2E340 

COMPOSITION 100% RAFFIA 100% PAPER STRAW  
COLOUR TYPE  
SIZE ADJUSTABLE ONE SIZE



Share with us your look on  
Social — media





C

# City fashion

---

WOMEN'S COLLECTION

---

HAT'S · CAP'S · BOB'S

Original details and a feminine touch guaranteed for the city fashion collection ! Floral and romantic motifs, a clever blend of shapes and designs in sparkling colours on a wide range of models: hats, caps, bobs... Give free rein to your desires ! Fresh, imaginative and always-on trend, you are ready to savour the pleasures of summer.

MODELS CHARACTERISTICS ICONS



*Cotton*



*Linen*



*UV Index*



*Reversible*



*Waterproof*

---





ref. 2E18

COMPOSITION 100% COTTON  
COLOURS RED - NATURAL - BEIGE - NAVY  
SIZE ADJUSTABLE ONE SIZE



OPTION MADE IN PORTUGAL

ref. 2E18POR



ref. 2E347

COMPOSITION 100% COTTON  
COLOURS NATURAL - RED - BEIGE - NAVY  
SIZE ONE SIZE



ref. 2E349

COMPOSITION 100% COTTON  
COLOURS NATURAL - RED - BEIGE - NAVY  
SIZES S → L



ref. 2E348

COMPOSITION 100% COTTON  
COLOURS NATURAL - RED - BEIGE - NAVY  
SIZE ONE SIZE





ref. 2E300 

COMPOSITION 100% COTTON  
COLOURS SKY - JEANS - PINK - WHITE  
SIZE ONE SIZE

X P80/2 120 50



▶ 5

90 F11.0 X P80/2 120 50



▶ 2E308 MODEL TYPE

▶ 5

90 F11.0 X P80/2 120 50



▶ 2E300 MODEL PINK

▶ 5



ref. 2E308 

COMPOSITION 53% COTTON 47% RECYCLED COTTON  
COLOUR TYPE  
SIZE ONE SIZE



ref. 2E309 

COMPOSITION 53% COTTON 47% RECYCLED COTTON  
COLOUR TYPE  
SIZE ONE SIZE







REVERSIBLE HAT  
UNIQUE PATTERN  
FOR ALL COLOURS

REVERSIBLE HAT  
**ref. 2E301**   
COMPOSITION 100% COTTON  
COLOURS PINK - WHITE - SKY - JEANS  
SIZE ONE SIZE



  
**ref. 2E303**   
COMPOSITION 100% COTTON  
COLOURS JEANS - PINK - WHITE  
SKY  
SIZE ONE SIZE

F11.0 X P80/2 120 50



2E302 MODEL JEANS ▶ 5

90 F11.0 X P80/2 120 50



2E306 MODEL JEANS ▶ 5

90 F11.0 X 90 F11.0 X P80/2 120



2E305 ▶ BLUE



  
**ref. 2E302**   
COMPOSITION 100% COTTON  
COLOURS SKY - JEANS - WHITE - PINK  
SIZE ONE SIZE



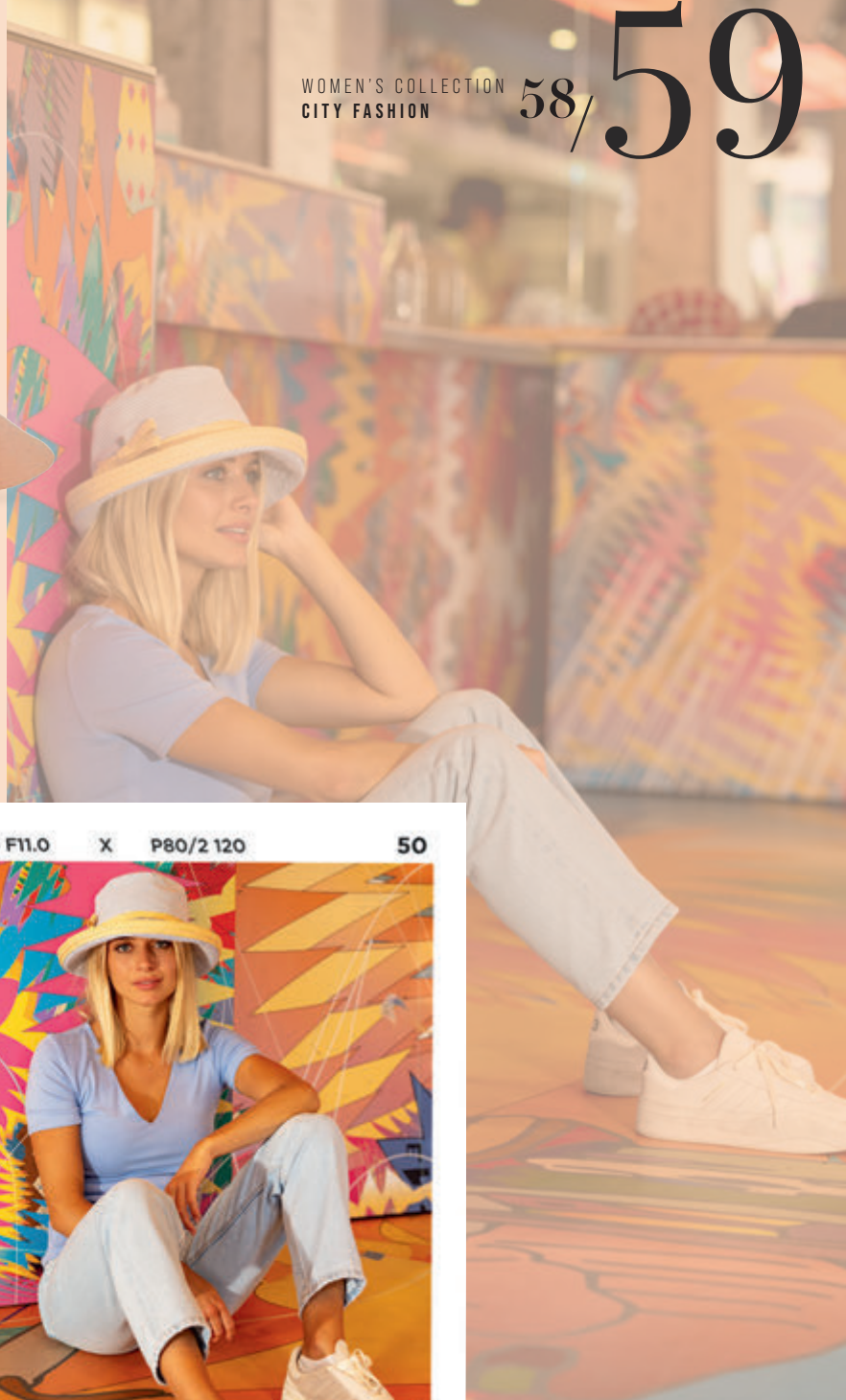
  
**ref. 2E304**   
COMPOSITION 100% COTTON  
COLOURS SKY - JEANS - WHITE - PINK  
SIZE ONE SIZE





ref. 2E306 

COMPOSITION 100% COTTON  
COLOURS BLUE - PINK - SALMON  
SIZE ONE SIZE



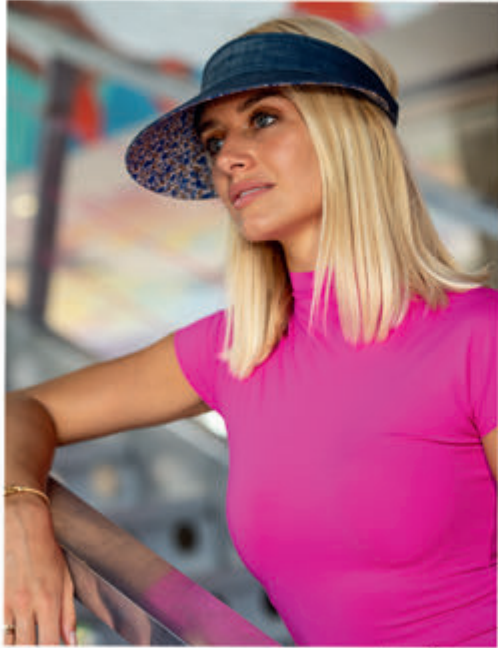
50

90 F11.0

X

P80/2 120

50



▶ 2E302 MODEL JEANS P.58 ▶ 5

90 F11.0

X

P80/2 120


50



▶ 2E305 MODEL BLUE ▶ 5



REVERSIBLE CAP

ref. 2E307 

COMPOSITION 100% COTTON  
COLOURS BLUE - PINK - SALMON  
SIZE ONE SIZE





ref. 2E305 

COMPOSITION 100% COTTON  
COLOURS BLUE - PINK - SALMON  
SIZE ONE SIZE





  
**ref. 1H89**   
COMPOSITION 67% POLYESTER  
33% COTTON  
COLOURS KHAKI - BEIGE - NAVY - BLACK  
SIZES 55 → 61



 **OPTION MADE IN PORTUGAL**  
**ref. 1H89POR**  


 **OPTION MADE IN PORTUGAL**  
**ref. 1H92POR**  





  
**ref. 1H92**   
COMPOSITION 100% OILED COTTON  
COLOURS BLACK - KHAKI - BROWN - CAMEL  
SIZES 55 → 61

Share with us your look on  
Social — media

  
**ref. 1H375**   
COMPOSITION 100% OILED COTTON  
COLOURS BLACK/KHAKI - KHAKI/CAMEL  
SIZES 55 → 61



  
**ref. 1H376**   
COMPOSITION 100% OILED COTTON  
COLOURS BLACK/KHAKI - KHAKI/CAMEL  
SIZES 55 → 61



  
**ref. 1H93**   
COMPOSITION 100% OILED COTTON  
COLOURS BLACK - KHAKI - BROWN - CAMEL  
SIZES 55 → 61

 **OPTION MADE IN PORTUGAL**  
**ref. 1H91POR** 



  
**ref. 1H91**   
COMPOSITION 100% OILED COTTON  
COLOURS BLACK - KHAKI - BROWN - CAMEL  
SIZES 55 → 61





# B Rainwear

---

MEN'S AND WOMEN'S COLLECTION

---

BUCKET'S · HAT'S · CAP'S

Brave summer showers with panache !  
Our rain hats are the perfect combination of protection and style. Waterproof and breathable, they keep your head dry while providing optimum comfort in sunshine or rain. Available in bright, summery colours, these essential accessories add a fresh touch to your summer outfits. No more plans ruined by an unexpected rain shower! Made with care in our French, Italian and Portuguese workshops, our hats combine traditional craftsmanship with modern design. Adopt them to turn every raining day into an opportunity to shine, even in the middle of summer ! Keep your style intact, whatever the season's weather surprises.

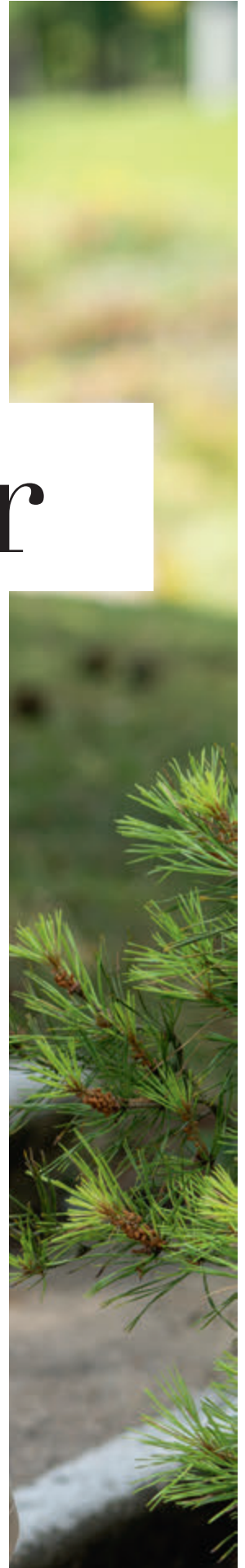
MODELS CHARACTERISTICS ICONS



*Waterproof*



*Coated cotton  
Oiled cotton*







ref.2E193 

COMPOSITION 78% COTTON 22% COATED ACRYLIC  
COLOURS TERRACOTTA - PETROL BLUE - MUSTARD - LINEN - GREY - PEARL  
SIZES S → L

90 F11.0 X 90 F11.0



2H412



ref.2H45 

COMPOSITION 70% POLYESTER  
30% POLYURETHANE  
COLOURS RED - BLACK  
SIZES S → L



ref.2H44 

COMPOSITION 100% COATED COTTON  
COLOURS BLACK - RED  
SIZES S → L



ref.2H405 

COMPOSITION 100% LINEN 100% COATED COTTON  
COLOURS GREEN - LAGOON - PETROL BLUE  
SIZES S → L



ref.2H406 

COMPOSITION 100% LINEN 100% COATED COTTON  
COLOUR RED  
SIZES S → L



ref.2H401 

COMPOSITION 100% LINEN 100% COATED COTTON  
COLOUR MUSTARD  
SIZES S → L



ref.2H402 

COMPOSITION 100% LINEN 100% COATED COTTON  
COLOUR LIME GREEN  
SIZES S → L



ref.2H403 

COMPOSITION 100% LINEN 100% COATED COTTON  
COLOUR RED  
SIZES S → L



ref. 2E195

COMPOSITION 78% COTTON 22% COATED ACRYLIC  
COLOURS PEARL - GREY - LINEN - MUSTARD - PETROL BLUE - TERRACOTTA  
SIZES S → L

X P80/2 120

50



▶ 5

90 F11.0

X P80/2 120

50



2H412 MODEL PEARL

▶ 5

90 F11.0

X P80/2 120

50



2H412 PEARL

▶ 5



ref. 2H409

COMPOSITION 100% LINEN 100% COATED COTTON  
COLOUR MUSTARD  
SIZES S → L



ref. 2H410

COMPOSITION 100% LINEN 100% COATED COTTON  
COLOUR LIGHT GREEN  
SIZES S → L



ref. 2H412

COMPOSITION 100% LINEN 100% COATED COTTON  
COLOUR PEARL  
SIZES S → L



ref. 2H413

COMPOSITION 100% LINEN 100% COATED COTTON  
COLOUR GREY  
SIZES S → L





ACCESSORIES  
ACCESSORIES  
ACCESSORIES  
ACCESSORIES  
ACCESSORIES  
ACCESSORIES  
ACCESSORIES  
ACCESSORIES  
ACCESSORIES  
ACCESSORIES  
ACCESSORIES  
ACCESSORIES  
ACCESSORIES  
ACCESSORIES  
ACCESSORIES  
ACCESSORIES  
ACCESSORIES  
ACCESSORIES  
ACCESSORIES  
ACCESSORIES  
ACCESSORIES

MF  
M BY FLECHET

NEW  
CO.  
SPRING SUMMER  
PRINTEMPS ÉTÉ  
2025

THE HAT THAT LOVES *YOU.*

WWW.MBYFLECHET.FR



1



2



3

## ACCESSORIES

### LE HAT THAT LOVES YOU

---

1. **MACCESS1** : cap box
2. **MACCESS2** : cone
3. **MACCESS3** : shopping bag

Like us on  
*Social* —  
media



THE HAT THAT LOVES *YOU.*



#SPRING SUMMER 2025  
@M\_BY\_FLECHET





## GLOSSARY / INDEX

REF.	PAGE	REF.	PAGE	REF.	PAGE	REF.	PAGE	REF.	PAGE
<b>1E</b>		1E416.....	16	1E539.....	18	1H92POR.....	60	2E312.....	49
1E1.....	34	1E419.....	14	1E540.....	18	1H93.....	60	2E313.....	49
1E2.....	16	1E425.....	33	1E541.....	34	1H375.....	60	2E314.....	49
1E6.....	14	1E453.....	8	1E542.....	34	1H376.....	60	2E315.....	48
1E11.....	18	1E455.....	7	1E545.....	35	<b>2E</b>		2E316.....	48
1E12.....	19	1E456.....	24	1E548.....	28	2E3.....	44	2E317.....	48
1E13.....	19	1E457.....	25	1E549.....	28	2E14.....	47	2E318.....	48
1E30.....	22	1E463.....	16	1E551.....	39	2E18.....	56	2E329.....	46
1E34.....	16	1E471.....	17	1E553.....	33	2E18POR.....	56	2E331.....	47
1E36.....	11	1E500.....	8	1E554.....	33	2E23.....	44	2E332.....	47
1E39.....	16	1E501.....	8	1E555.....	35	2E30.....	39	2E333.....	49
1E52.....	32	1E502.....	25	1E556.....	35	2E33.....	39	2E334.....	49
1E61.....	38	1E503.....	14	1E557.....	30	2E53.....	51	2E335.....	49
1E70.....	28	1E504.....	15	1E559.....	30	2E56.....	44	2E337.....	53
1E76.....	38	1E505.....	11	1E560.....	30	2E57.....	45	2E338.....	53
1E77.....	28	1E506.....	19	1E561.....	33	2E58.....	51	2E339.....	53
1E78.....	32	1E507.....	19	1E562.....	30	2E59.....	46	2E340.....	53
1E89.....	38	1E508.....	10	1E564.....	32	2E60.....	44	2E341.....	48
1E96.....	38	1E509.....	10	1E565.....	32	2E61.....	45	2E342.....	48
1E101.....	23	1E510.....	9	1E566.....	31	2E95.....	42	2E343.....	48
1E102.....	23	1E511.....	9	1E567.....	31	2E100.....	42	2E344.....	50
1E113.....	34	1E512.....	9	1E568.....	33	2E101.....	42	2E345.....	50
1E161.....	32	1E513.....	9	1E569.....	29	2E123.....	51	2E346.....	50
1E204.....	7	1E514.....	9	1E570.....	12	2E132.....	46	2E347.....	56
1E209.....	24	1E515.....	10	1E571.....	12	2E145.....	51	2E348.....	56
1E228.....	23	1E516.....	10	1E572.....	12	2E193.....	62	2E349.....	56
1E253.....	32	1E517.....	7	1E573.....	13	2E195.....	63	<b>2H</b>	
1E262.....	34	1E518.....	7	1E574.....	13	2E216.....	46	2H44.....	62
1E267.....	30	1E519.....	8	1E575.....	13	2E245.....	51	2H45.....	62
1E274.....	22	1E520.....	16	1E576.....	12	2E247.....	45	2H401.....	62
1E276.....	18	1E521.....	16	1E577.....	12	2E250.....	42	2H402.....	62
1E310.....	25	1E523.....	6	1E578.....	12	2E252.....	42	2H403.....	62
1E324.....	29	1E524.....	6	1E579.....	38	2E300.....	57	2H405.....	62
1E325.....	29	1E525.....	21	<b>1H</b>		2E301.....	58	2H406.....	62
1E326.....	29	1E526.....	21	1H8.....	24	2E302.....	58	2H409.....	63
1E399.....	22	1E527.....	25	1H13.....	24	2E303.....	58	2H410.....	63
1E400.....	14	1E528.....	23	1H80.....	17	2E304.....	58	2H412.....	63
1E401.....	14	1E529.....	8	1H80bis.....	17	2E305.....	59	2H413.....	63
1E403.....	11	1E530.....	15	1H81.....	17	2E306.....	59	<b>MACCESS</b>	
1E407.....	11	1E531.....	19	1H89.....	60	2E307.....	59	MACCESS1.....	64
1E412.....	19	1E532.....	15	1H89POR.....	60	2E308.....	57	MACCESS2.....	64
1E413.....	19	1E534.....	19	1H91.....	60	2E309.....	57	MACCESS3.....	64
1E414.....	11	1E535.....	10	1H91POR.....	60	2E310.....	43		
1E415.....	16	1E536.....	10	1H92.....	60	2E311.....	43		
		1E537.....	10						
		1E538.....	10						



# MF

M by FLECHET



SPRING SUMMER | PRINTEMPS ÉTÉ 2025

# WE  
A R E  
M B Y F L É C H E T

HEAD OFFICE.

Avenue de la Coopération  
86200 Loudun - FRANCE

[www.mbyflechet.fr](http://www.mbyflechet.fr)

